



STANLEY 248

\$696,000

**LOT 1144 CODRINGTON STREET
(MAPPLEWOD)**

4  **2**  **2** 

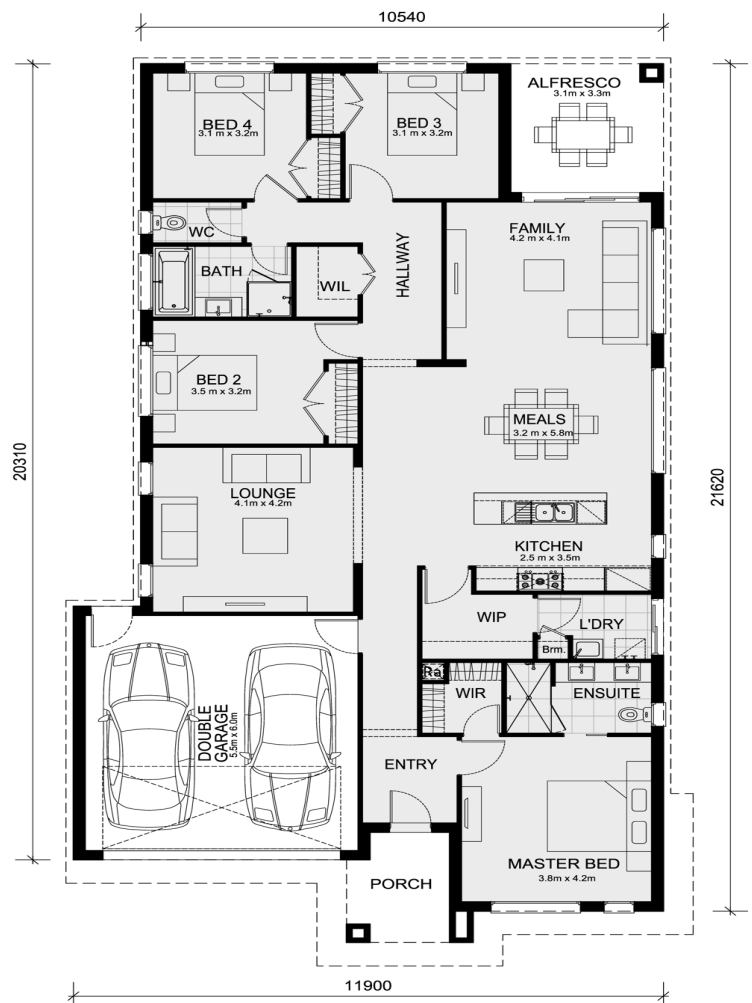
Mimosa Homes Proudly Presents

The Stanley 248 House and Land Package!

* NCC Compliant Floorplan

* Mimosa Homes Added Value Inclusions:

- Inclusive of site costs & connections with H1 class slab as per standard inclusions!
- Quality floor coverings throughout entire home!
- Higher ceilings 2550mm to ground floor!
- Double Glazed Awning windows
- Downlights to living areas!
- Vitrified Compact Surface benchtop to kitchen!
- 900mm S/S upright oven and cook top with S/S canopy rangehood!
- Stainless steel Dishwasher and Microwave with trim kit!
- Overhead cupboards & wine rack! (Design specific)



Area Details

| | | | |
|-----------|--------|---------------|--------|
| Land Size | 392sqm | Building Size | 233sqm |
|-----------|--------|---------------|--------|

Contact:Rajeev Sethi
rajeev@mimosahomes.com.au

0414536048
www.mimosahomes.com.au



STANLEY 248

\$696,000

**LOT 1144 CODRINGTON STREET
(MAPPLEWOD)**

4  **2**  **2** 

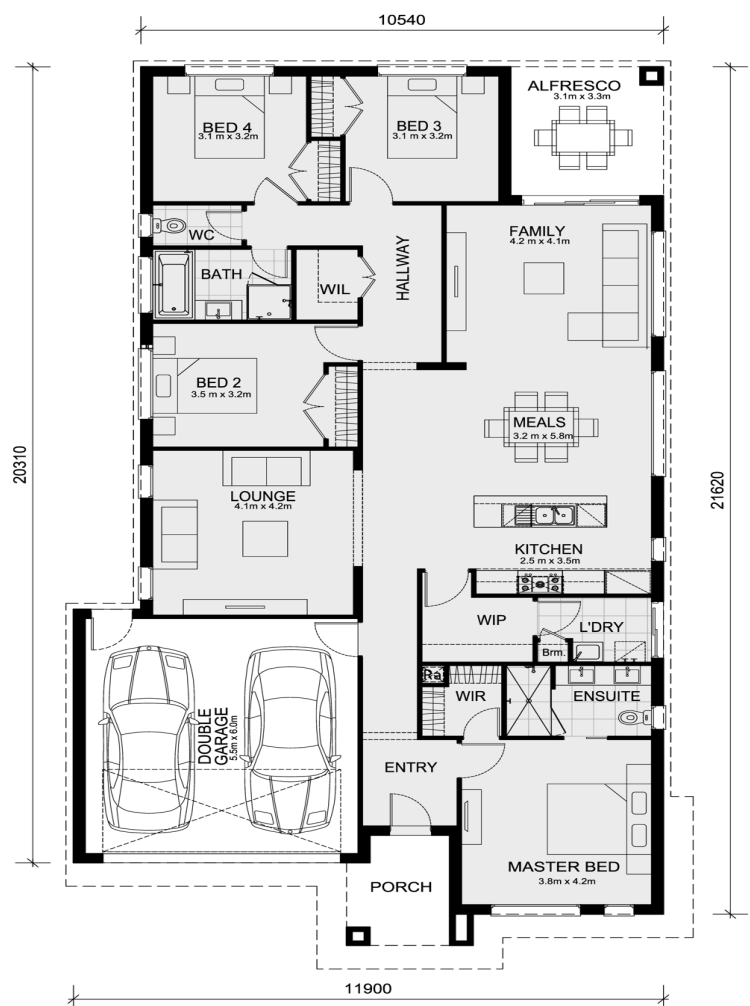
Mimosa Homes Proudly Presents

The Stanley 248 House and Land Package!

* NCC Compliant Floorplan

* Mimosa Homes Added Value Inclusions:

- Inclusive of site costs & connections with H1 class slab as per standard inclusions!
- Quality floor coverings throughout entire home!
- Higher ceilings 2550mm to ground floor!
- Double Glazed Awning windows
- Downlights to living areas!
- Vitrified Compact Surface benchtop to kitchen!
- 900mm S/S upright oven and cook top with S/S canopy rangehood!
- Stainless steel Dishwasher and Microwave with trim kit!
- Overhead cupboards & wine rack! (Design specific)



Area Details

| | | | |
|-----------|--------|---------------|--------|
| Land Size | 392sqm | Building Size | 233sqm |
|-----------|--------|---------------|--------|

Contact:Rajeev Sethi
rajeev@mimosahomes.com.au

0414536048
www.mimosahomes.com.au



STANLEY 248

\$696,000

**LOT 1144 CODRINGTON STREET
(MAPPLEWOD)**

4  **2**  **2** 

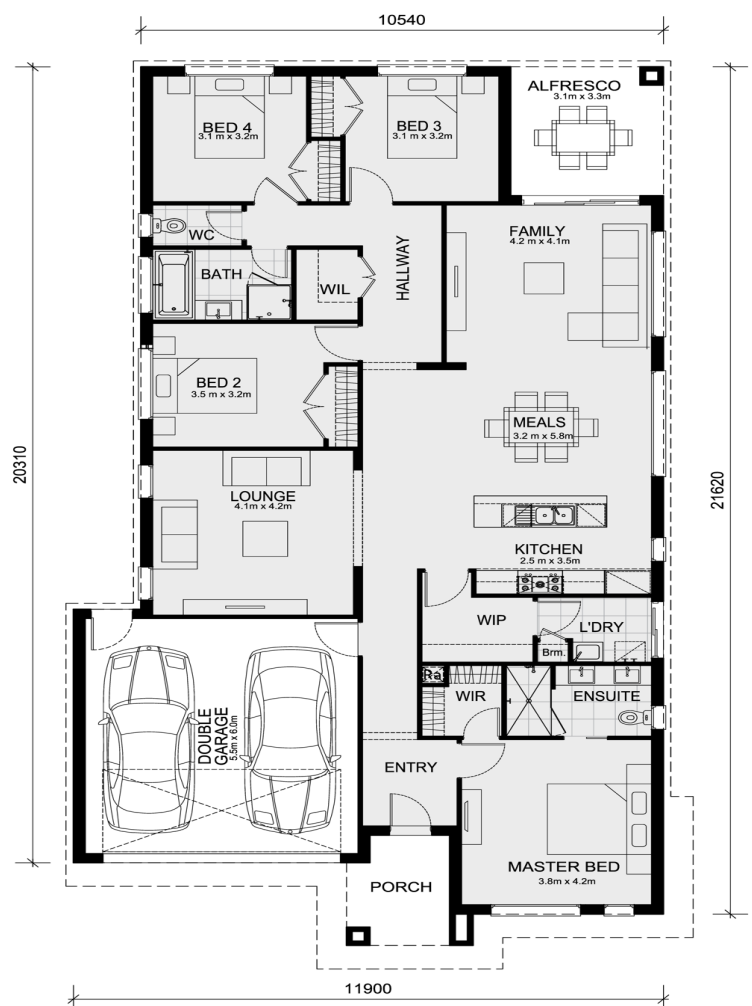
Mimosa Homes Proudly Presents

The Stanley 248 House and Land Package!

* NCC Compliant Floorplan

* Mimosa Homes Added Value Inclusions:

- Inclusive of site costs & connections with H1 class slab as per standard inclusions!
- Quality floor coverings throughout entire home!
- Higher ceilings 2550mm to ground floor!
- Double Glazed Awning windows
- Downlights to living areas!
- Vitrified Compact Surface benchtop to kitchen!
- 900mm S/S upright oven and cook top with S/S canopy rangehood!
- Stainless steel Dishwasher and Microwave with trim kit!
- Overhead cupboards & wine rack! (Design specific)



Area Details

Land Size 392sqm Building Size 233sqm

Contact: **Rajeev Sethi**
rajeev@mimosahomes.com.au

0414536048
www.mimosahomes.com.au



STANLEY 248

\$696,000

**LOT 1144 CODRINGTON STREET
(MAPPLEWOD)**

4  **2**  **2** 

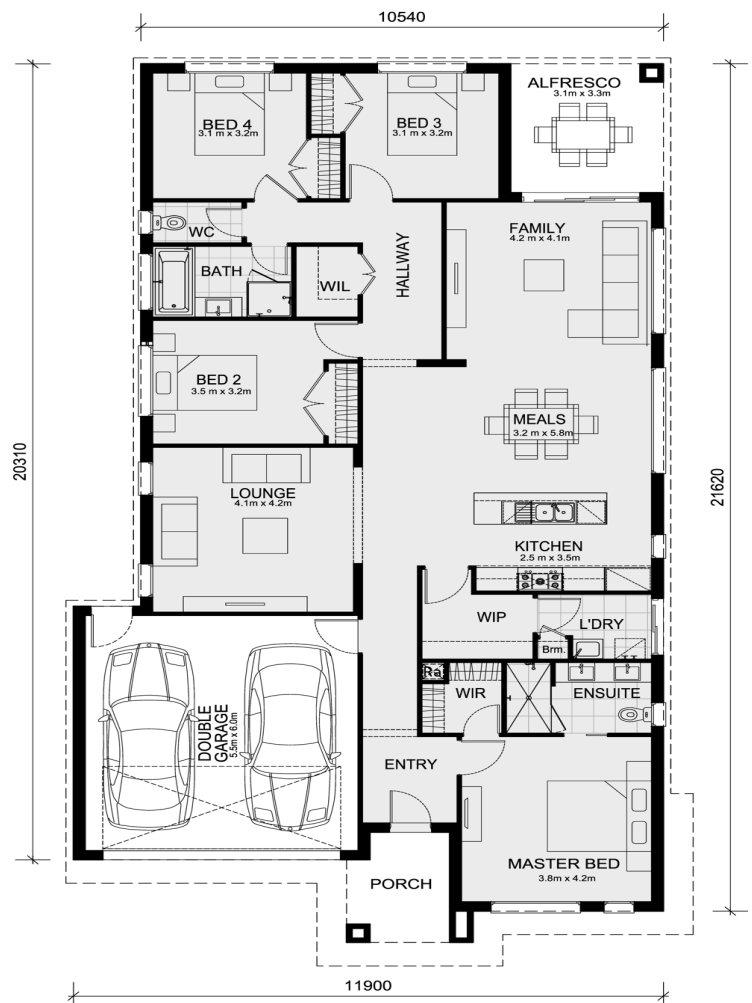
Mimosa Homes Proudly Presents

The Stanley 248 House and Land Package!

* NCC Compliant Floorplan

* Mimosa Homes Added Value Inclusions:

- Inclusive of site costs & connections with H1 class slab as per standard inclusions!
- Quality floor coverings throughout entire home!
- Higher ceilings 2550mm to ground floor!
- Double Glazed Awning windows
- Downlights to living areas!
- Vitrified Compact Surface benchtop to kitchen!
- 900mm S/S upright oven and cook top with S/S canopy rangehood!
- Stainless steel Dishwasher and Microwave with trim kit!
- Overhead cupboards & wine rack! (Design specific)



Area Details

Land Size 392sqm Building Size 233sqm

Contact: **Rajeev Sethi**
rajeev@mimosahomes.com.au

0414536048
www.mimosahomes.com.au



STANLEY 248

\$696,000

**LOT 1144 CODRINGTON STREET
(MAPPLEWOD)**

4  **2**  **2** 

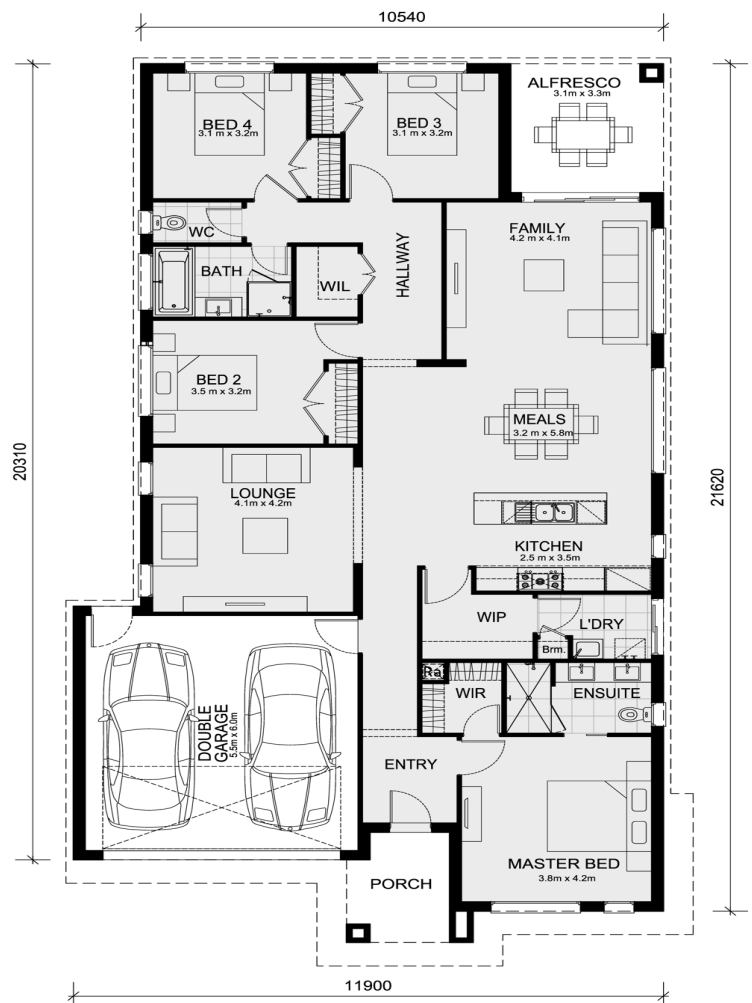
Mimosa Homes Proudly Presents

The Stanley 248 House and Land Package!

* NCC Compliant Floorplan

* Mimosa Homes Added Value Inclusions:

- Inclusive of site costs & connections with H1 class slab as per standard inclusions!
- Quality floor coverings throughout entire home!
- Higher ceilings 2550mm to ground floor!
- Double Glazed Awning windows
- Downlights to living areas!
- Vitrified Compact Surface benchtop to kitchen!
- 900mm S/S upright oven and cook top with S/S canopy rangehood!
- Stainless steel Dishwasher and Microwave with trim kit!
- Overhead cupboards & wine rack! (Design specific)



Area Details

Land Size 392sqm Building Size 233sqm

Contact: **Rajeev Sethi**
rajeev@mimosahomes.com.au

0414536048
www.mimosahomes.com.au



STANLEY 248

\$696,000

**LOT 1144 CODRINGTON STREET
(MAPPLEWOD)**

4  **2**  **2** 

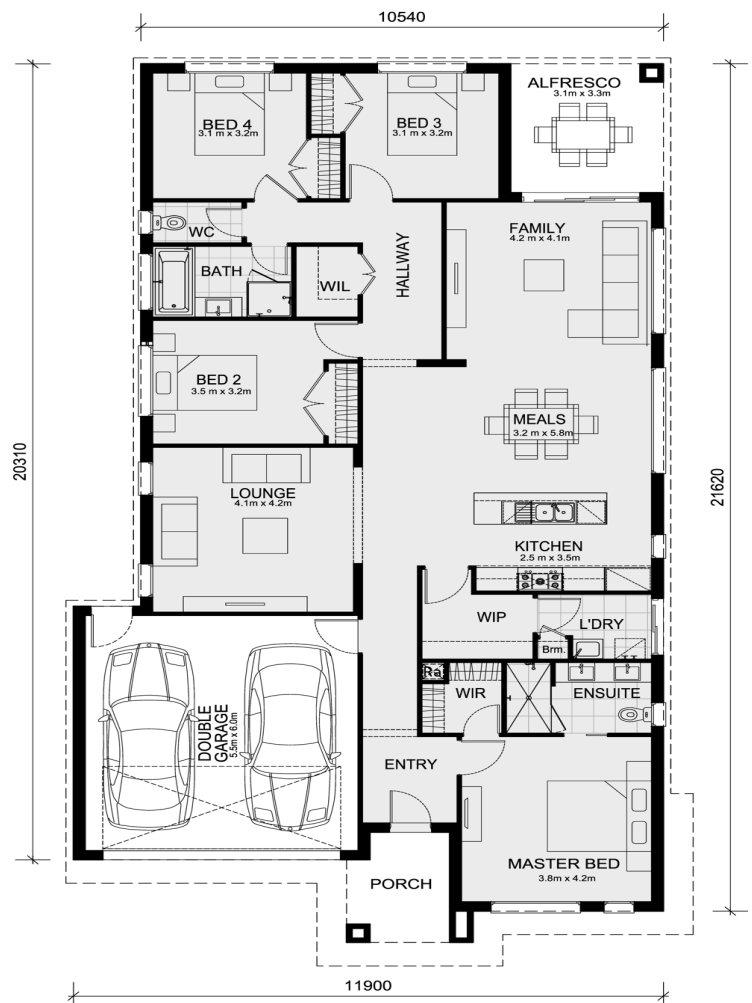
Mimosa Homes Proudly Presents

The Stanley 248 House and Land Package!

* NCC Compliant Floorplan

* Mimosa Homes Added Value Inclusions:

- Inclusive of site costs & connections with H1 class slab as per standard inclusions!
- Quality floor coverings throughout entire home!
- Higher ceilings 2550mm to ground floor!
- Double Glazed Awning windows
- Downlights to living areas!
- Vitrified Compact Surface benchtop to kitchen!
- 900mm S/S upright oven and cook top with S/S canopy rangehood!
- Stainless steel Dishwasher and Microwave with trim kit!
- Overhead cupboards & wine rack! (Design specific)



Area Details

| | | | |
|-----------|--------|---------------|--------|
| Land Size | 392sqm | Building Size | 233sqm |
|-----------|--------|---------------|--------|

Contact:Rajeev Sethi
rajeev@mimosahomes.com.au

0414536048
www.mimosahomes.com.au